

**NEW  
Patent!!!**

**New Generation**

***i*-Fitting**



***i*-Fitting**

Integration Tube Fitting Series



Perfect installation is  
guaranteed by I-Fitting

**BMT Co., Ltd.**  
[www.superlok.com](http://www.superlok.com)

# INAUGURATE A NEW ERA OF FITTING

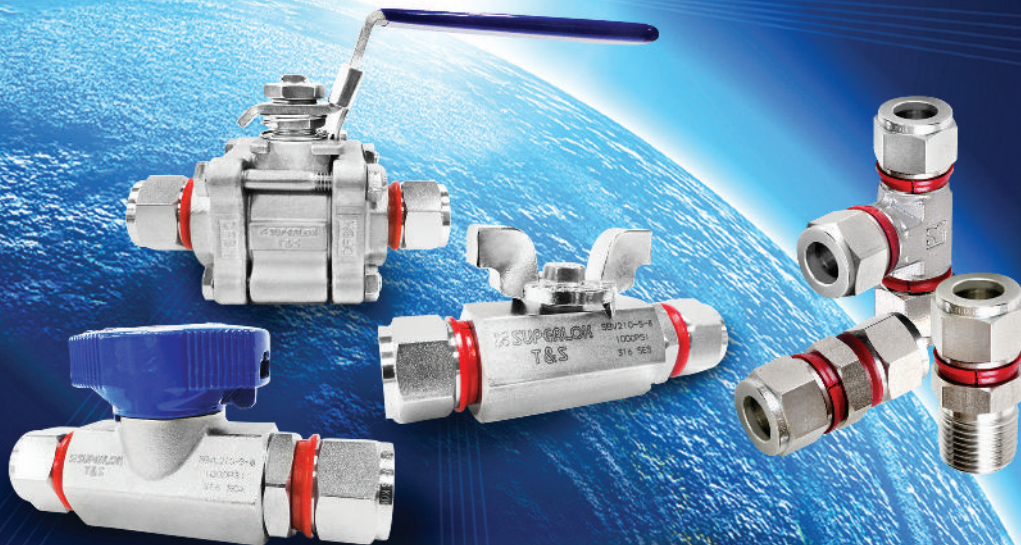
## Integration Tube Fittings

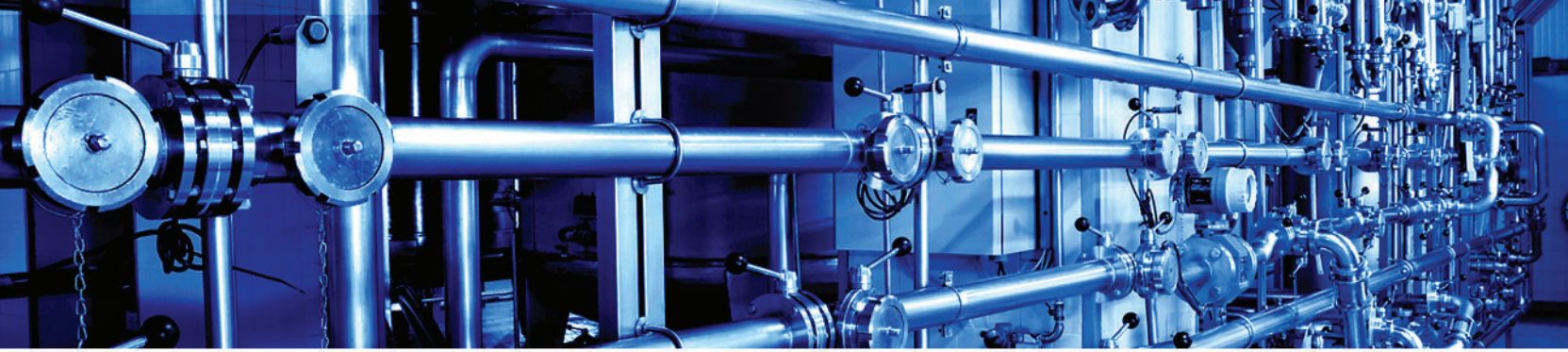


“Perfect installation is guaranteed by I-Fitting !!!”



# *i*-Fitting

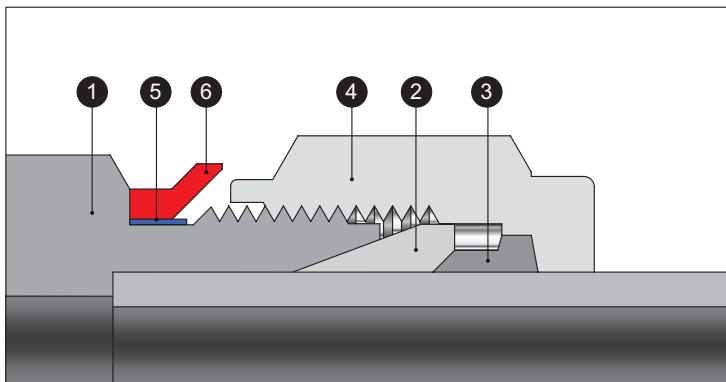




# Integration Tube Fitting Series *i*-Fitting

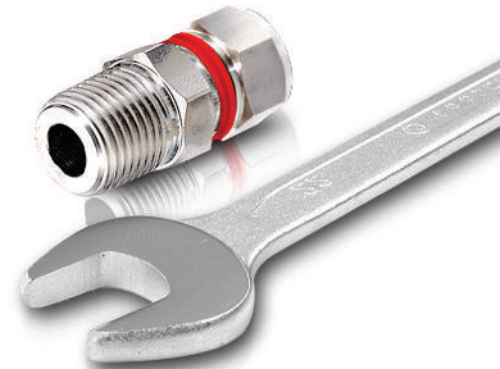
## Featured I-Fittings

- Reduce the installation time extremely.
- Assure the perfect installation.
- No required inspection gauge.
- Make cost-down greatly by the innovated productivity.
- Easy installation available even by non-skilled worker.



## Structure

- ① BODY
- ② FRONT FERRULE
- ③ BACK FERRULE
- ④ NUT
- ⑤ CHECK RING
- ⑥ INSPECTION RING



- I-Fittings is composed of Body, Front & Back Ferrules, Nut, Inspection Ring and Check Ring
- I-Fittings has the structure to check the completion of installation separating Inspection Ring from the body

## How the SUPERLOK I-Fitting Works

- Able to see to separate the Inspection Ring from the products with eyes.
- Able to hear to separate the Inspection Ring from the products with ears.
- Able to touch to separate the Inspection Ring from the products with hands.

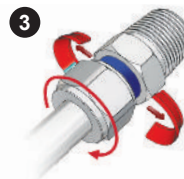
## Installation Procedure



**1** Prepare the required Integration Fitting composed of Body, Nut, Front & Back Ferrule and Inspection Ring properly.



**2** Insert tube into the Fittings fully and turn Nut to tighten firmly not to turn completely.



**3** Completion of installation is shown to rotate the Nut until Inspection Ring is taking off.

## Ordering information

**SMCI - 8 - 8N - SS**

**1**

**2**

**3**

### 1 Type of fitting

To order, use "I" as a suffix to the desired Type of fitting ordering designation.

ex) **SMC** → **SMCI**  
SUPERLOK Tube Fitting Male Connector      Integration Fitting Male Connector

### 2 Size of Fitting

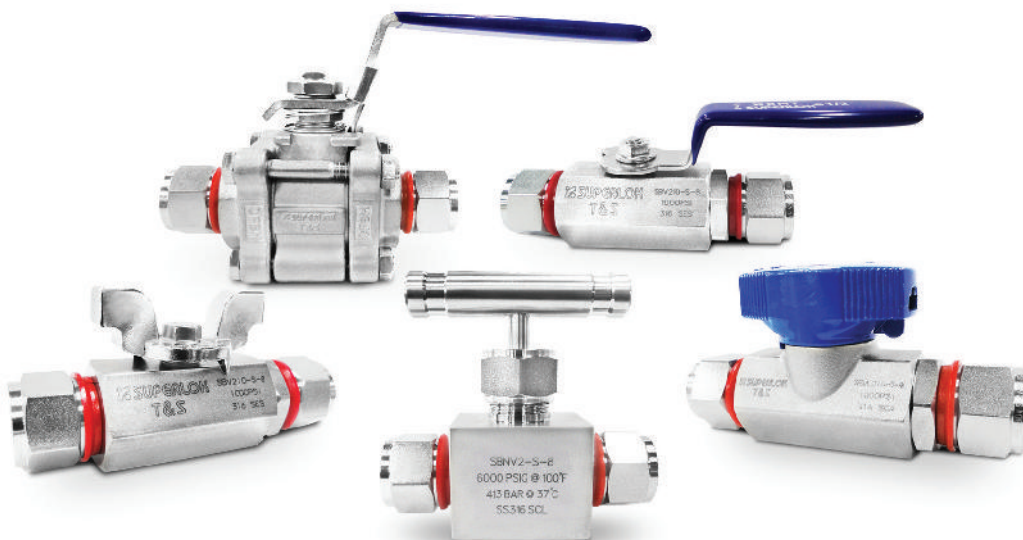
<b>Tube O.D (inch)</b>	1/4	3/8	1/2	3/4	1
<b>Designation</b>	4	6	8	12	16
<b>Tube O.D (mm)</b>	6	10	12	20	25

### 3 Material

A - Aluminum      B - Brass  
 C - Carbon Steel      SS - Stainless Steel  
 M - Monel Alloy 400  
 INC - Inconel Alloy 600

## Standard Size

The basic size of the superlok integration fittings are 1/4, 3/8, 1/2, 3/4, 1 inch, and the rest of the size can also be custom made to suit customer's requirements.



**"Perfect installation is guaranteed by I-Fitting"**

# SUI Union



### Connects Fractional Tubes

Part No.	Tube O.D. D (inch)	d Min	Width Across Flat		A	B	I	L
			h (inch)	H (inch)				
SUI - 4	1/4	4.82	1/2	9/16	15.24	17.78	26.16	40.89
SUI - 6	3/8	7.11	5/8	11/16	16.76	19.30	30.22	44.95
SUI - 8	1/2	10.41	13/16	7/8	22.86	21.84	30.98	51.30
SUI - 12	3/4	15.74	1-1/16	1-1/8	24.38	21.84	33.27	53.59
SUI - 16	1	22.35	1-3/8	1-1/2	31.24	26.41	40.38	64.77

# SRUI Reducing Union

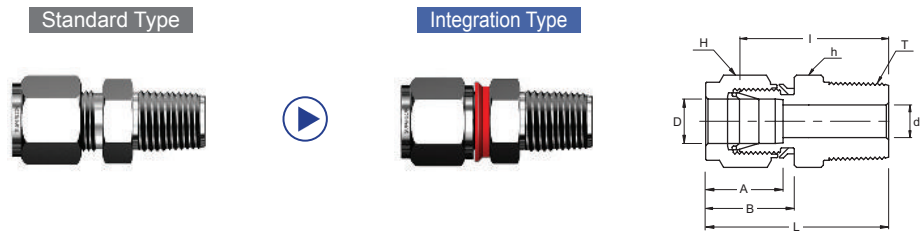


### Connects Fractional Tubes

Part No.	Tube O.D.		d Min	Width Across Flat			A	A <sub>1</sub>	B	B <sub>1</sub>	I	L
	D (inch)	D <sub>1</sub> (inch)		h (inch)	H (inch)	H <sub>1</sub> (inch)						
SRUI - 6 - 4	3/8	1/4	4.82	5/8	11/16	9/16	16.76	15.24	19.30	17.78	28.44	43.18
SRUI - 8 - 4	1/2	1/4	4.82	13/16	7/8	9/16	22.86	15.24	21.84	17.78	29.46	46.99
SRUI - 8 - 6	1/2	3/8	7.11	13/16	7/8	11/16	22.86	16.76	21.84	19.30	30.98	48.51
SRUI - 12 - 4	3/4	1/4	4.82	1-1/16	1-1/8	9/16	24.38	15.24	21.84	17.78	31.75	49.27
SRUI - 12 - 6	3/4	3/8	7.11	1-1/16	1-1/8	11/16	24.38	16.76	21.84	19.30	33.27	50.80
SRUI - 12 - 8	3/4	1/2	10.41	1-1/16	1-1/8	7/8	24.38	22.86	21.84	21.84	33.27	53.59
SRUI - 16 - 8	1	1/2	10.41	1-3/8	1-1/2	7/8	31.24	22.86	26.41	21.84	39.50	63.24
SRUI - 16 - 12	1	3/4	15.74	1-3/8	1-1/2	1-1/8	31.24	24.38	26.41	21.84	39.00	62.73

All dimensions in millimeters unless specified as "inch". Dimension are for reference only, subject to change

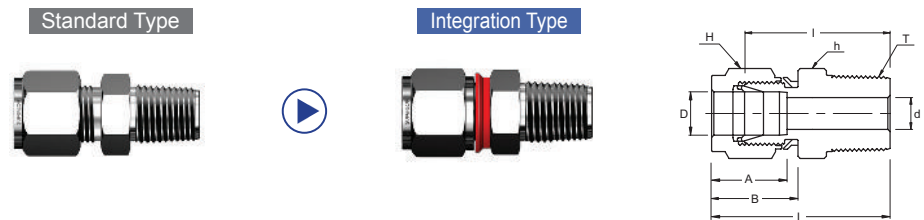
**SMCI**  
Male Connector



**Connects Fractional Tubes To Female NPT Thread**

Part No.	Tube O.D. D (inch)	T (NPT)	d Min	Width Across Flat		A	B	I	L
				h (inch)	H (inch)				
SMCI - 4 - 4N	1/4	1/4	4.82	9/16	9/16	15.24	17.78	30.48	37.84
SMCI - 4 - 6N	1/4	3/8	4.82	11/16	9/16	15.24	17.78	30.98	38.35
SMCI - 4 - 8N	1/4	1/2	4.82	7/8	9/16	15.24	17.78	37.33	44.70
SMCI - 4 - 12N	1/4	3/4	4.82	1-1/16	9/16	15.24	17.78	38.86	46.22
SMCI - 6 - 4N	3/8	1/4	7.11	5/8	11/16	16.76	19.30	32.51	39.87
SMCI - 6 - 6N	3/8	3/8	7.11	11/16	11/16	16.76	19.30	32.51	39.87
SMCI - 6 - 8N	3/8	1/2	7.11	7/8	11/16	16.76	19.30	38.86	46.22
SMCI - 6 - 12N	3/8	3/4	7.11	1-1/16	11/16	16.76	19.30	40.38	47.75
SMCI - 8 - 6N	1/2	3/8	9.65	13/16	7/8	22.86	21.84	33.27	43.43
SMCI - 8 - 8N	1/2	1/2	10.41	7/8	7/8	22.86	21.84	38.86	49.02
SMCI - 8 - 12N	1/2	3/4	10.41	1-1/16	7/8	22.86	21.84	40.38	50.54
SMCI - 8 - 16N	1/2	1	10.41	1-3/8	7/8	22.86	21.84	46.99	57.15
SMCI - 12 - 8N	3/4	1/2	11.93	1-1/16	1-1/8	24.38	21.84	40.38	50.54
SMCI - 12 - 12N	3/4	3/4	15.74	1-1/16	1-1/8	24.38	21.84	40.38	50.54
SMCI - 12 - 16N	3/4	1	15.74	1-3/8	1-1/8	24.38	21.84	46.99	57.15
SMCI - 16 - 8N	1	1/2	11.93	1-3/8	1-1/2	31.24	26.41	45.21	57.40
SMCI - 16 - 12N	1	3/4	15.74	1-3/8	1-1/2	31.24	26.41	45.21	57.40
SMCI - 16 - 16N	1	1	22.35	1-3/8	1-1/2	31.24	26.41	50.03	62.23

**SMCI**  
Male Connector

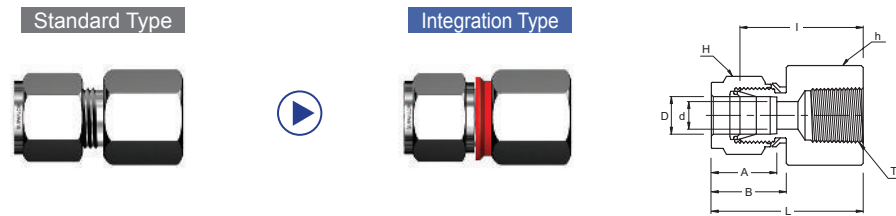


**Connects Fractional Tube To Female ISO Tapered Thread**

Part No.	Tube O.D. D (inch)	T R (PT)	d Min	Width Across Flat		A	B	I	L
				h (inch)	H (inch)				
SMCI - 4 - 6R	1/4	3/8	4.82	11/16	9/16	15.24	17.78	30.98	38.35
SMCI - 4 - 8R	1/4	1/2	4.82	7/8	9/16	15.24	17.78	37.33	44.70
SMCI - 6 - 4R	3/8	1/4	7.11	5/8	11/16	16.76	19.30	32.51	39.87
SMCI - 6 - 6R	3/8	3/8	7.11	11/16	11/16	16.76	19.30	32.51	39.87
SMCI - 6 - 8R	3/8	1/2	7.11	7/8	11/16	16.76	19.30	38.86	46.22
SMCI - 8 - 4R	1/2	1/4	7.11	13/16	7/8	22.86	21.84	33.27	43.43
SMCI - 8 - 6R	1/2	3/8	9.65	13/16	7/8	22.86	21.84	33.27	43.43
SMCI - 8 - 8R	1/2	1/2	10.41	7/8	7/8	22.86	21.84	38.86	49.02
SMCI - 8 - 12R	1/2	3/4	10.41	1-1/16	7/8	22.86	21.84	40.38	50.54
SMCI - 12 - 12R	3/4	3/4	15.74	1-1/16	1-1/8	24.38	21.84	40.38	50.54
SMCI - 16 - 16R	1	1	22.35	1-3/8	1-1/2	31.24	26.41	50.03	62.23

All dimensions in millimeters unless specified as "inch". Dimension are for reference only, subject to change

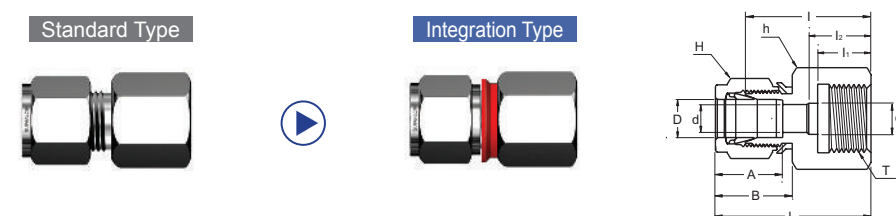
## SFCI Female Connector



### Connects Fractional Tubes To Male NPT Thread

Part No.	Tube O.D. D (inch)	T * (NPT)	d Min	Width Across Flat		A	B	I	L
				h (inch)	H (inch)				
SFCI - 4 - 2N	1/4	1/8	4.82	9/16	9/16	15.24	17.78	23.87	31.24
SFCI - 4 - 4N	1/4	1/4	4.82	3/4	9/16	15.24	17.78	28.44	35.81
SFCI - 4 - 6N	1/4	3/8	4.82	7/8	9/16	15.24	17.78	30.22	37.59
SFCI - 4 - 8N	1/4	1/2	4.82	1-1/16	9/16	15.24	17.78	35.05	42.41
SFCI - 6 - 2N	3/8	1/8	7.11	5/8	11/16	16.76	19.30	25.40	32.76
SFCI - 6 - 4N	3/8	1/4	7.11	3/4	11/16	16.76	19.30	30.22	37.59
SFCI - 6 - 6N	3/8	3/8	7.11	7/8	11/16	16.76	19.30	31.75	39.11
SFCI - 6 - 8N	3/8	1/2	7.11	1-1/16	11/16	16.76	19.30	36.57	43.94
SFCI - 6 - 12N	3/8	3/4	7.11	1-5/16	11/16	16.76	19.30	40.38	47.75
SFCI - 8 - 4N	1/2	1/4	10.41	13/16	7/8	22.86	21.84	30.22	40.38
SFCI - 8 - 6N	1/2	3/8	10.41	7/8	7/8	22.86	21.84	31.75	41.91
SFCI - 8 - 8N	1/2	1/2	10.41	1-1/16	7/8	22.86	21.84	36.57	46.73
SFCI - 8 - 12N	1/2	3/4	10.41	1-5/16	7/8	22.86	21.84	38.10	48.26
SFCI - 12 - 8N	3/4	1/2	15.74	1-1/16	1-1/8	24.38	21.84	36.57	46.73
SFCI - 12 - 12N	3/4	3/4	15.74	1-5/16	1-1/8	24.38	21.84	38.10	48.26
SFCI - 16 - 12N	1	3/4	22.35	1-3/8	1-1/2	31.24	26.41	41.14	53.34
SFCI - 16 - 16N	1	1	22.35	1-5/8	1-1/2	31.24	26.41	50.03	62.23

## SGCI Gauge Connector



### Connects Fractional Tubes To ISO Parallel Thread

Part No.	Tube O.D. D (inch)	T G(PF)	d Min	d <sub>1</sub>	Width Across Flat		A	B	I	l <sub>1</sub>	l <sub>2</sub>	L
					h (inch)	H (inch)						
SGCI - 4 - 4G	1/4	1/4	4.82	5.58	3/4	9/16	15.24	17.78	30.22	13.00	17.00	37.59
SGCI - 4 - 6G	1/4	3/8	4.82	6.60	15/16	9/16	15.24	17.78	30.22	14.20	20.30	37.59
SGCI - 4 - 8G	1/4	1/2	4.82	6.60	1-1/16	9/16	15.24	17.78	36.07	18.80	24.90	43.43
SGCI - 6 - 4G	3/8	1/4	5.58	-	3/4	11/16	16.76	19.30	31.75	13.00	-	39.12
SGCI - 6 - 6G	3/8	3/8	6.60	-	15/16	11/16	16.76	19.30	31.24	14.20	-	38.61
SGCI - 6 - 8G	3/8	1/2	7.11	-	1-1/16	11/16	16.76	19.30	34.54	18.80	-	41.91
SGCI - 8 - 4G	1/2	1/4	5.58	-	7/8	7/8	22.86	21.84	31.80	13.00	-	41.95
SGCI - 8 - 6G	1/2	3/8	6.60	-	15/16	7/8	22.86	21.84	34.29	14.20	-	44.45
SGCI - 8 - 8G	1/2	1/2	7.11	7.11	1-1/16	7/8	22.86	21.84	38.10	18.80	-	48.26

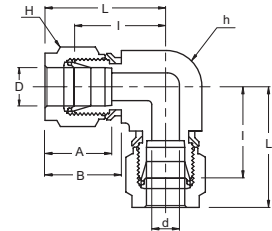
All dimensions in millimeters unless specified as "inch". Dimension are for reference only, subject to change

# SUEI Union Elbow

Standard Type



Integration Type



### Connects Fractional Tubes

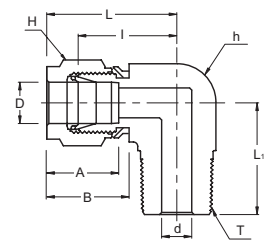
Part No.	Tube O.D. D (inch)	d Min	Width Across Flat		A	B	I	L
			h (inch)	H (inch)				
SUEI - 4	1/4	4.82	1/2	9/16	15.24	17.78	20.10	27.40
SUEI - 6	3/8	7.11	5/8	11/16	16.76	19.30	23.11	30.48
SUEI - 8	1/2	10.41	13/16	7/8	22.86	21.84	25.90	36.06
SUEI - 12	3/4	15.74	1-1/16	1-1/8	24.38	21.84	29.71	39.87
SUEI - 16	1	22.35	1-3/8	1-1/2	31.24	26.41	36.83	49.02

# SMEI Male Elbow

Standard Type



Integration Type



### Connects Fractional Tube To Female NPT Thread

Part No.	Tube O.D. D (inch)	T (NPT)	d Min-	Width Across Flat		A	B	I	L	L <sub>1</sub>
				h (inch)	H (inch)					
SMEI - 4 - 2N	1/4	1/8	4.82	1/2	9/16	15.24	17.78	19.55	26.92	18.79
SMEI - 4 - 4N	1/4	1/4	4.82	1/2	9/16	15.24	17.78	19.55	26.92	23.36
SMEI - 4 - 6N	1/4	3/8	4.82	5/8	9/16	15.24	17.78	22.35	29.71	26.16
SMEI - 4 - 8N	1/4	1/2	4.82	13/16	9/16	15.24	17.78	24.38	31.75	33.02
SMEI - 6 - 2N	3/8	1/8	4.82	5/8	11/16	16.76	19.30	23.11	30.48	20.82
SMEI - 6 - 4N	3/8	1/4	7.11	5/8	11/16	16.76	19.30	23.11	30.48	25.40
SMEI - 6 - 6N	3/8	3/8	7.11	5/8	11/16	16.76	19.30	23.87	31.24	26.16
SMEI - 6 - 8N	3/8	1/2	7.11	13/16	11/16	16.76	19.30	25.90	33.27	33.02
SMEI - 6 - 12N	3/8	3/4	7.11	1-1/16	11/16	16.76	19.30	29.71	37.08	36.83
SMEI - 8 - 4N	1/2	1/4	7.11	13/16	7/8	22.86	21.84	25.90	36.06	28.19
SMEI - 8 - 6N	1/2	3/8	9.65	13/16	7/8	22.86	21.84	25.90	36.06	28.19
SMEI - 8 - 8N	1/2	1/2	10.41	13/16	7/8	22.86	21.84	25.90	36.06	33.02
SMEI - 8 - 12N	1/2	3/4	10.41	1-1/16	7/8	22.86	21.84	29.71	39.87	36.83
SMEI - 12 - 8N	3/4	1/2	11.93	1-1/16	1-1/8	24.38	21.84	29.71	39.87	36.83
SMEI - 12 - 12N	3/4	3/4	15.74	1-1/16	1-1/8	24.38	21.84	29.71	39.87	36.83
SMEI - 16 - 12N	1	3/4	15.74	1-3/8	1-1/2	31.24	26.41	36.83	49.02	41.65
SMEI - 16 - 16N	1	1	22.35	1-3/8	1-1/2	31.24	26.41	36.83	49.02	46.48

All dimensions in millimeters unless specified as "inch". Dimension are for reference only, subject to change

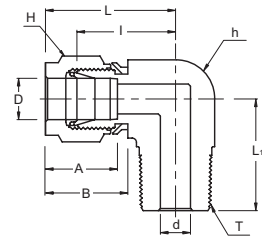
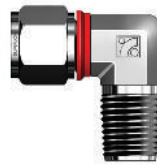


## SMEI Male Elbow

Standard Type



Integration Type

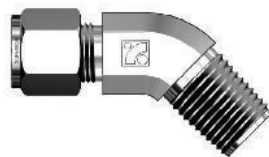


### Connects Fractional Tubes To Female ISO Tapered Thread

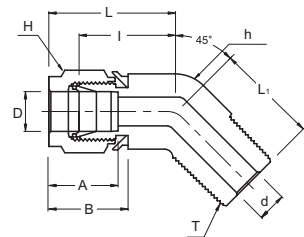
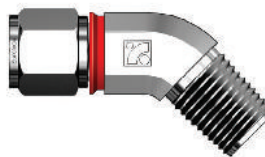
Part No.	Tube O.D. D (inch)	T R (RT)	d Min	Width Across Flat		A	B	I	L	L <sub>1</sub>
				h (inch)	H (inch)					
SMEI - 4 - 2R	1/4	1/8	4.82	1/2	9/16	15.24	17.78	19.55	26.92	18.79
SMEI - 4 - 4R	1/4	1/4	4.82	1/2	9/16	15.24	17.78	19.55	26.92	23.36
SMEI - 4 - 6R	1/4	3/8	4.82	5/8	9/16	15.24	17.78	22.35	29.71	26.16
SMEI - 4 - 8R	1/4	1/2	4.82	13/16	9/16	15.24	17.78	24.38	31.75	33.02
SMEI - 6 - 4R	3/8	1/4	7.11	5/8	11/16	16.76	19.30	23.11	30.48	25.40
SMEI - 6 - 6R	3/8	3/8	7.11	5/8	11/16	16.76	19.30	23.87	31.24	26.16
SMEI - 8 - 6R	1/2	3/8	9.65	13/16	7/8	22.86	21.84	25.91	36.07	28.20
SMEI - 8 - 8R	1/2	1/2	10.41	13/16	7/8	22.86	21.84	25.91	36.07	33.02

## SHMEI 45° Male Elbow

Standard Type



Integration Type

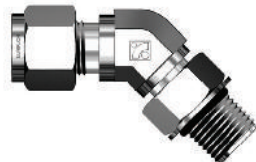


### Connects Fractional Tubes To Female NPT Thread

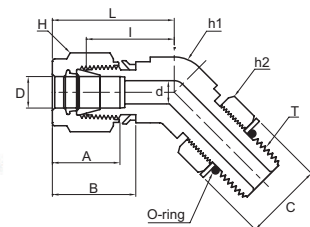
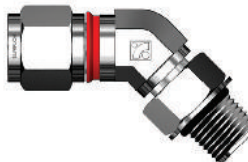
Part No.	Tube O.D. D (inch)	T* (NPT)	d Min	Width Across Flat		A	B	I	L	L <sub>1</sub>
				h (inch)	H (inch)					
SHMEI - 4 - 2R	1/4	1/8	4.82	1/2	9/16	15.24	17.78	17.27	24.63	16.51
SHMEI - 4 - 4R	1/4	1/4	4.82	1/2	9/16	15.24	17.78	17.27	24.63	21.08
SHMEI - 6 - 2R	3/8	1/8	4.82	5/8	11/16	16.76	19.30	20.57	27.94	18.28
SHMEI - 6 - 4R	3/8	1/4	7.11	5/8	11/16	16.76	19.30	20.57	27.94	22.86
SHMEI - 6 - 6R	3/8	3/8	7.11	13/16	11/16	16.76	19.30	21.84	29.21	24.13
SHMEI - 8 - 6R	1/2	3/8	9.65	13/16	7/8	22.86	21.84	21.84	32.00	24.13
SHMEI - 8 - 8R	1/2	1/2	10.41	13/16	7/8	22.86	21.84	21.84	32.00	28.95

## SPHMEI 45° Positionable Male Elbow

Standard Type



Integration Type

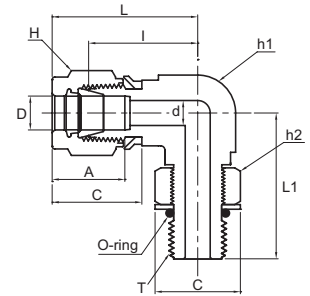


### Connects Fractional Tubes To SAE/MS Straight Thread

Part No.	Tube O.D. D (inch)	T (U)	d Min	Width Across Flat			A	B	I	L	L <sub>1</sub>	C
				h1	h2	H						
SPHMEI - 4 - 4U	1/4	7/16-20	4.83	1/2	9/16	9/16	15.24	17.78	18.29	25.64	25.65	16.51
SPHMEI - 6 - 6U	3/8	9/16-18	7.11	5/8	11/16	11/16	16.76	19.30	20.57	27.94	28.19	20.07
SPHMEI - 8 - 8U	1/2	3/4-16	10.41	13/16	7/8	7/8	22.86	21.84	21.84	32.00	32.26	25.65
SPHMEI - 12 - 12U	3/4	1-1/16-12	15.75	1-1/8	1-1/4	1-1/8	24.38	24.84	29.72	39.88	47.24	36.58
SPHMEI - 16 - 16U	1	1-5/16-12	22.35	1-3/8	1-1/2	1-1/2	31.24	26.42	35.31	47.50	50.55	43.94

All dimensions in millimeters unless specified as "inch". Dimension are for reference only, subject to change

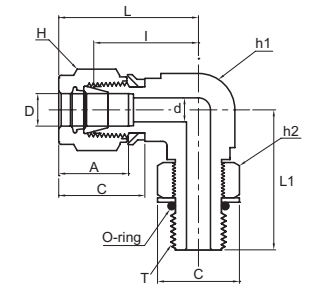
# SPMEI Positionable Male Elbow



### Connects Fractional Tubes To SAE/MS Straight Thread

Part No.	Tube O.D. D (inch)	T (U)	d Min	Width Across Flat			A	B	I	L	L1	C
				h1	h2	H						
SPMEI - 4 - 4U	1/4	7/16-20	4.83	1/2	9/16	9/16	15.24	17.78	21.08	28.45	28.45	16.51
SPMEI - 4 - 6U	1/4	9/16-18	4.83	5/8	11/16	9/16	15.24	17.78	23.11	30.48	32.26	20.07
SPMEI - 6 - 6U	3/8	9/16-18	7.11	5/8	11/16	11/16	16.76	19.30	24.64	32.00	32.26	20.07
SPMEI - 6 - 8U	3/8	3/4-16	7.11	13/16	7/8	11/16	16.76	19.30	27.43	34.80	37.85	25.65
SPMEI - 8 - 8U	1/2	3/4-16	10.41	13/16	7/8	7/8	22.86	21.84	27.43	37.59	37.85	25.65
SPMEI - 12 - 12U	3/4	1-1/16-12	15.75	1-1/16	1-1/4	1-1/8	24.38	24.84	31.24	41.40	48.77	36.58
SPMEI - 16 - 16U	1	1-5/16-12	22.35	1-3/8	1-1/2	1-1/2	31.24	26.42	38.35	50.55	53.59	43.94

# SPMEI Positionable Male Elbow



### Connects Fractional Tubes To Female ISO Parallel Thread

Part No.	Tube O.D. D (inch)	T (PF)	d Min	Width Across Flat			A	B	I	L	L1	C
				h1	h2	H						
SPMEI - 4 - 2G	1/4	1/8	4.06	1/2	9/16	9/16	15.24	17.78	19.56	26.92	26.42	17.27
SPMEI - 4 - 4G	1/4	1/4	4.83	5/8	3/4	9/16	15.24	17.78	21.59	28.96	32.26	22.86
SPMEI - 6 - 4G	3/8	1/4	5.84	5/8	3/4	11/16	16.76	19.30	23.11	30.48	32.26	22.86
SPMEI - 6 - 6G	3/8	3/8	7.11	13/16	7/8	11/16	16.76	19.30	25.91	33.27	37.08	26.42
SPMEI - 8 - 4G	3/8	1/4	5.84	13/16	3/4	7/8	22.86	21.84	25.91	36.07	35.05	26.42
SPMEI - 8 - 6G	1/2	3/8	7.87	13/16	7/8	7/8	22.86	21.84	25.91	36.07	37.08	22.86
SPMEI - 8 - 8G	1/2	1/2	10.41	15/16	1-1/16	7/8	22.86	21.84	27.94	38.10	43.43	26.42
SPMEI - 12 - 8G	3/4	1/2	11.94	1-1/16	1-1/16	1-1/8	24.38	21.84	29.72	39.88	45.21	32.00
SPMEI - 12 - 12G	3/4	3/4	15.75	1-1/16	1-3/8	1-1/8	24.38	21.84	29.72	39.88	48.77	41.15
SPMEI - 16 - 12G	1	3/4	15.75	1-3/8	1-3/8	1-1/2	31.24	26.42	36.83	49.02	53.34	41.15
SPMEI - 16 - 16G	1	1	19.81	1-3/8	1-3/8	1-1/2	31.24	26.42	36.83	49.02	53.59	48.51

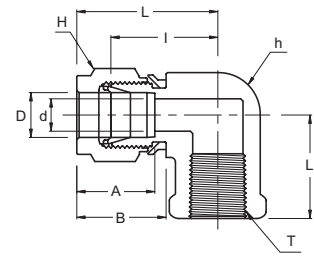
All dimensions in millimeters unless specified as "inch". Dimension are for reference only, subject to change

# SFEI Female Elbow

Standard Type



Integration Type



## Connects Fractional Tubes To Male NPT Thread

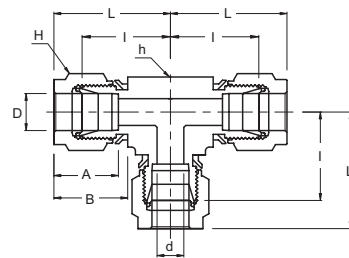
Part No.	1Tube O.D. D (inch)	T* (NPT)	d Min	Width Across Flat		A	B	I	L	L <sub>1</sub>
				h (inch)	H (inch)					
SFEI - 4 - 2N	1/4	1/8	4.82	1/2	9/16	15.24	17.78	19.55	26.92	19.05
SFEI - 4 - 4N	1/4	1/4	4.82	11/16	9/16	15.24	17.78	22.35	29.71	22.35
SFEI - 4 - 6N	1/4	3/8	4.82	13/16	9/16	15.24	17.78	24.38	31.75	22.35
SFEI - 4 - 8N	1/4	1/2	4.82	1	9/16	15.24	17.78	27.17	34.54	28.44
SFEI - 6 - 2N	3/8	1/8	7.11	5/8	11/16	16.76	19.30	23.11	30.48	19.05
SFEI - 6 - 4N	3/8	1/4	7.11	11/16	11/16	16.76	19.30	23.87	31.24	22.35
SFEI - 6 - 6N	3/8	3/8	7.11	13/16	11/16	16.76	19.30	25.90	33.27	22.35
SFEI - 6 - 8N	3/8	1/2	7.11	1	11/16	16.76	19.30	28.70	36.06	28.44
SFEI - 8 - 4N	1/2	1/4	10.41	13/16	7/8	22.86	21.84	25.90	36.06	22.35
SFEI - 8 - 6N	1/2	3/8	10.41	13/16	7/8	22.86	21.84	25.90	36.06	22.35
SFEI - 8 - 8N	1/2	1/2	10.41	1	7/8	22.86	21.84	28.70	38.86	37.00
SFEI - 12 - 8N	3/4	1/2	15.74	1-1/16	1-1/8	24.38	21.84	29.71	39.87	28.44
SFEI - 12 - 12N	3/4	3/4	15.74	1-3/8	1-1/8	24.38	21.84	34.54	44.70	31.75
SFEI - 16 - 12N	1	3/4	22.35	1-3/8	1-1/2	31.24	26.41	36.83	49.02	31.75
SFEI - 16 - 16N	1	1	22.35	1-11/16	1-1/2	31.24	26.41	41.40	53.59	38.10

# SUTI Union Tee

Standard Type



Integration Type

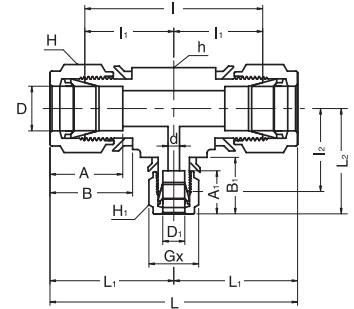
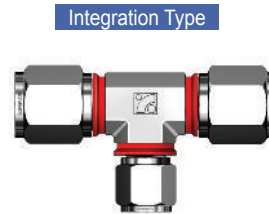
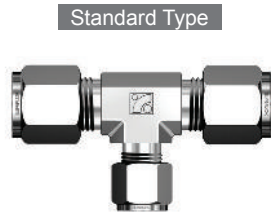


## Connects Fractional Tubes

Part No.	Tube O.D. D (inch)	d Min	Width Across Flat		A	B	I	L
			h (inch)	H (inch)				
SUTI - 4	1/4	4.82	1/2	9/16	15.24	17.78	30.98	38.35
SUTI - 6	3/8	7.11	5/8	11/16	15.24	17.78	37.33	44.70
SUTI - 8	1/2	10.41	13/16	7/8	16.76	19.30	32.51	39.87
SUTI - 12	3/4	15.74	1-1/16	1-1/8	16.76	19.30	32.51	39.87
SUTI - 16	1	22.35	1-3/8	1-1/2	16.76	19.30	38.86	46.22

All dimensions in millimeters unless specified as "inch". Dimension are for reference only, subject to change

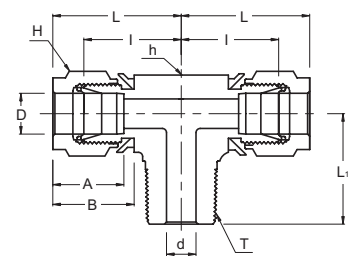
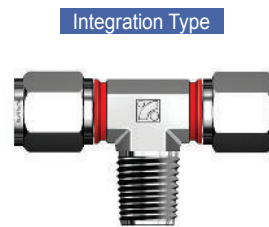
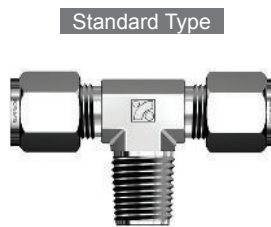
# SRUTI Reducing Union Tee



**Connects Fractional Tubes**

Part No.	Tube O.D.		d Min	Width Across Flat			A	A1	B	B1	I	I1	I2	L	L1	L2
	D (inch)	D <sub>1</sub> (inch)		h (inch)	H (inch)	H <sub>1</sub> (inch)										
SRUTI - 6 - 4	3/8	1/4	4.82	5/8	11/16	9/16	16.76	15.24	19.30	17.78	46.22	23.11	21.59	60.96	30.48	28.95
SRUTI - 8 - 4	1/2	1/4	4.82	13/16	7/8	9/16	22.86	15.24	21.84	17.78	51.81	25.90	24.38	72.13	36.06	31.75
SRUTI - 8 - 6	1/2	3/8	7.11	13/16	7/8	11/16	22.86	16.76	21.84	19.30	51.81	25.90	25.90	72.13	36.06	33.27
SRUTI - 12 - 6	3/4	3/8	7.11	1 1/16	1 1/8	11/16	24.38	16.76	21.84	19.30	59.43	29.71	29.71	79.75	39.87	37.08
SRUTI - 12 - 8	3/4	1/2	10.41	1 1/16	1 1/8	7/8	24.38	22.86	21.84	21.84	59.43	29.71	29.71	79.75	39.87	39.87
SRUTI - 16 - 6	1	3/8	7.11	1 3/8	1 1/2	1 1/16	31.24	16.76	26.41	19.30	73.66	36.83	34.54	98.04	49.02	41.91
SRUTI - 16 - 8	1	1/2	10.41	1 3/8	1 1/2	7/8	31.24	21.84	26.41	22.86	73.66	36.83	34.54	98.04	49.02	44.70
SRUTI - 16 - 12	1	3/4	15.74	1 3/8	1 1/2	1 1/8	31.24	24.38	26.41	21.84	73.66	36.83	34.54	98.04	49.02	44.70

# SMBTI Male Branch Tee



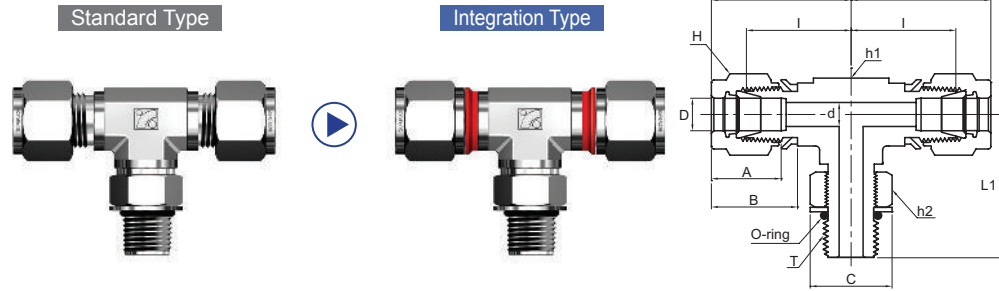
**Connects Fractional Tubes To Female NPT Thread**

Part No.	Tube O.D. D (inch)	T* (NPT)	d Min	Width Across Flat		A	B	I	L	L <sub>1</sub>
				h (inch)	H (inch)					
SMBTI - 4 - 2N	1/4	1/8	4.82	1/2	9/16	15.24	17.78	19.55	26.92	18.79
SMBTI - 4 - 4N	1/4	1/4	4.82	1/2	9/16	15.24	17.78	19.55	26.92	23.36
SMBTI - 6 - 4N	3/8	1/4	7.11	5/8	11/16	16.76	19.30	23.11	30.48	25.40
SMBTI - 6 - 6N	3/8	3/8	7.11	5/8	11/16	16.76	19.30	23.10	30.48	28.19
SMBTI - 8 - 6N	1/2	3/8	9.65	13/16	7/8	22.86	21.84	25.90	36.06	28.19
SMBTI - 8 - 8N	1/2	1/2	10.41	13/16	7/8	22.86	21.84	25.90	36.06	33.02
SMBTI - 12 - 12N	3/4	3/4	15.74	1-1/16	1-1/8	24.38	21.84	29.71	39.87	36.83

All dimensions in millimeters unless specified as "inch". Dimension are for reference only, subject to change

# SPMBTI

## Positionable Male Branch Tee

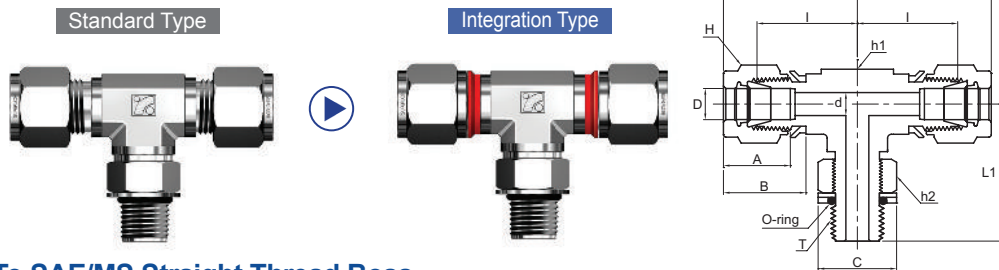


Connects Fractional Tubes To Female ISO Parallel Thread

Part No.	Tube O.D. D (inch)	T (PF)	d Min	Width Across Flat			A	B	I	L	L1	C
				h1	h2	H						
SPMBTI - 4 - 2G	1/4	1/8	4.06	1/2	9/16	9/16	15.24	17.78	19.56	26.92	26.42	17.27
SPMBTI - 4 - 4G	1/4	1/4	4.83	5/8	3/4	9/16	15.24	17.78	21.59	28.96	32.26	22.86
SPMBTI - 6 - 4G	3/8	1/4	5.08	5/8	3/4	11/16	15.24	19.30	23.11	30.48	32.26	22.86
SPMBTI - 8 - 6G	3/8	3/8	7.87	13/16	7/8	7/8	22.86	21.84	25.91	36.07	37.08	26.42
SPMBTI - 8 - 8G	1/2	1/2	10.41	15/16	1-1/16	7/8	22.86	21.84	27.94	38.10	43.43	32.00
SPMBTI -12 - 8G	3/4	1/2	11.94	1-1/16	1-1/16	1-1/8	24.38	21.84	29.72	39.88	45.21	32.00
SPMBTI -12 - 12G	3/4	3/4	15.75	1-1/16	1-3/8	1-1/8	24.38	21.84	29.72	39.88	48.77	41.15
SPMBTI -16 - 16G	1	1	19.81	1-3/8	1-5/8	1-1/2	31.24	26.42	36.83	49.02	53.59	48.51

# SPMBTI

## Positionable Male Branch Tee



Connects Fractional Tubes To SAE/MS Straight Thread Boss

Part No.	Tube O.D. D (inch)	T (U)	d Min	Width Across Flat			A	B	I	L	L1	C
				h1	h2	H						
SPMBTI - 4 - 4U	1/4	7/16-20	4.83	1/2	9/16	9/16	15.24	17.78	21.08	28.45	28.45	16.51
SPMBTI - 6 - 6U	3/8	9/16-18	7.11	5/8	11/16	11/16	16.76	19.30	24.64	32.00	32.26	20.07
SPMBTI - 8 - 8U	1/2	3/4-16	10.41	13/16	7/8	7/8	22.86	21.84	27.43	37.59	37.85	25.65
SPMBTI -12 - 12U	3/4	1-1/16-12	15.75	1-1/16	1-1/4	1-1/8	24.38	21.84	31.24	41.40	48.77	36.58
SPMBTI -16 - 16U	1	1-5/16-12	22.35	1-3/8	1-1/2	1-1/2	31.24	26.42	38.35	50.55	53.59	43.94

# SMRTI

## Male Run Tee



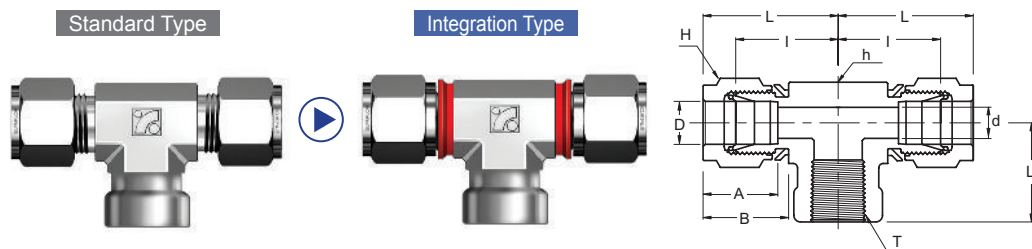
Connects Fractional Tubes To Female NPT Thread

Part No.	Tube O.D. D (inch)	T* (NPT)	d Min	Width Across Flat		A	B	I	L	L1
				h (inch)	H (inch)					
SMRTI - 4 - 2N	1/4	1/8	4.82	1/2	9/16	15.24	17.78	19.55	26.92	18.79
SMRTI - 4 - 4N	1/4	1/4	4.82	1/2	9/16	15.24	17.78	19.55	26.92	23.36
SMRTI - 6 - 4N	3/8	1/4	7.11	5/8	11/16	16.76	19.30	23.11	30.48	25.40
SMRTI - 6 - 6N	3/8	3/8	7.11	5/8	11/16	16.76	19.30	23.10	30.48	28.19
SMRTI - 8 - 6N	1/2	3/8	9.65	13/16	7/8	22.86	21.84	25.90	36.06	28.19
SMRTI - 8 - 8N	1/2	1/2	10.41	13/16	7/8	22.86	21.84	25.90	36.06	33.02
SMRTI -12 - 12N	3/4	3/4	15.74	1-1/16	1-1/8	24.38	21.84	29.71	39.87	36.83

All dimensions in millimeters unless specified as "inch". Dimension are for reference only, subject to change

# SFBTI

## Female Branch Tee

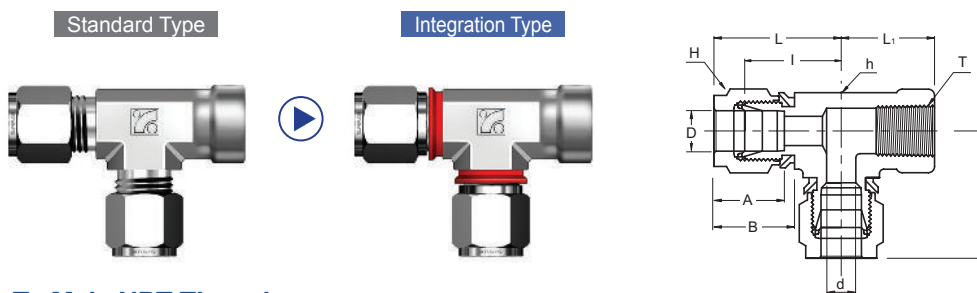


### Connects Fractional Tubes To Male NPT Thread

Part No.	Tube O.D. D (inch)	T* (NPT)	d Min	Width Across Flat		A	B	I	L	L1
				h (inch)	H (inch)					
SFBTI - 4 - 2N	1/4	1/8	4.82	1/2	9/16	15.24	17.78	26.41	26.92	19.05
SFBTI - 4 - 4N	1/4	1/4	4.82	11/16	9/16	15.24	17.78	26.41	29.71	22.35
SFBTI - 6 - 4N	3/8	1/4	7.11	11/16	11/16	16.76	19.30	26.41	31.24	22.35
SFBTI - 6 - 6N	3/8	3/8	7.11	13/16	11/16	16.76	19.30	26.41	33.27	22.35
SFBTI - 6 - 8N	3/8	1/2	7.11	1	11/16	16.76	19.30	26.41	36.07	28.45
SFBTI - 8 - 4N	1/2	1/4	10.41	13/16	7/8	22.86	21.84	26.41	36.06	22.35
SFBTI - 8 - 6N	1/2	3/8	10.41	13/16	7/8	22.86	21.84	26.41	36.06	22.35
SFBTI - 8 - 8N	1/2	1/2	10.41	1	7/8	22.86	21.84	26.41	38.86	28.44
SFBTI - 16 - 12N	1	3/4	22.35	1-3/8	1-1/2	31.24	26.41	36.83	49.02	31.75
SFBTI - 16 - 16N	1	1	22.35	1-11/16	1-1/2	31.24	26.41	41.40	53.59	38.10

# SFRTI

## Female Run Tee

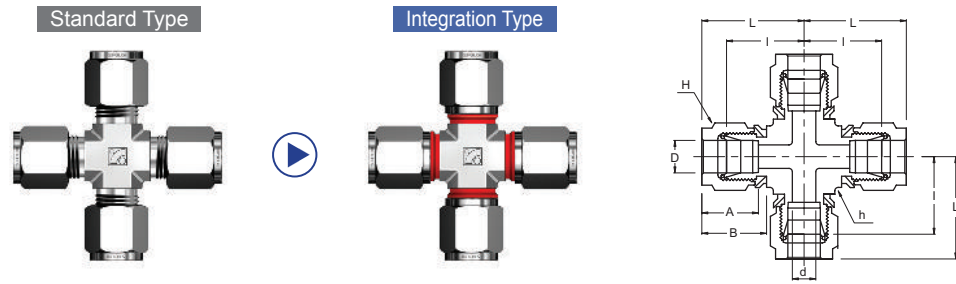


### Connects Fractional Tubes To Male NPT Thread

Part No.	Tube O.D. D (inch)	T* (NPT)	d Min	Width Across Flat		A	B	I	L	L1
				h (inch)	H (inch)					
SFRTI - 4 - 2N	1/4	1/8	4.82	1/2	9/16	15.24	17.78	19.55	26.92	26.92
SFRTI - 4 - 4N	1/4	1/4	4.82	11/16	9/16	15.24	17.78	22.35	29.71	29.71
SFRTI - 6 - 4N	3/8	1/4	7.11	11/16	11/16	16.76	19.30	23.87	31.24	31.24
SFRTI - 8 - 6N	1/2	3/8	10.41	13/16	7/8	22.86	21.84	25.90	36.06	36.06
SFRTI - 8 - 8N	1/2	1/2	10.41	1	7/8	22.86	21.84	28.70	39.87	39.87
SFRTI - 12 - 12N	3/4	3/4	15.74	1-3/8	1-1/8	24.38	21.84	34.54	44.70	44.70
SFRTI - 16 - 12N	1	3/4	22.35	1-3/8	1-1/2	31.24	26.41	36.83	49.02	49.02
SFRTI - 16 - 16N	1	1	22.35	1-11/16	1-1/2	31.24	26.41	41.40	53.59	53.59

All dimensions in millimeters unless specified as "inch". Dimension are for reference only, subject to change

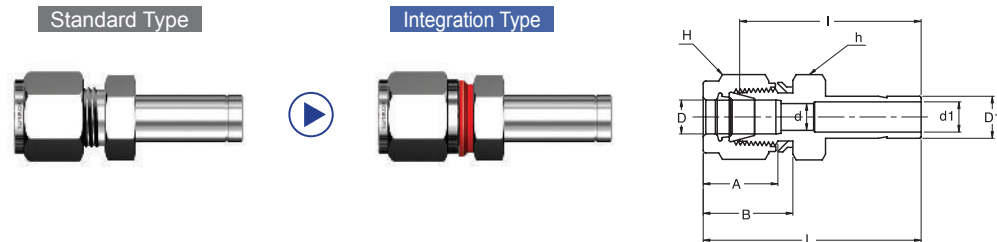
# SUCI Union Cross



### Connects Fractional Tubes

Part No.	Tube O.D. D (inch)	d Min	Width Across Flat		A	B	I	L
			h (inch)	H (inch)				
SUCI - 4	1/4	4.82	1/2	9/16	15.24	17.78	19.55	26.92
SUCI - 6	3/8	7.11	5/8	11/16	16.76	19.30	23.11	30.48
SUCI - 8	1/2	10.41	13/16	7/8	22.86	21.84	25.90	36.06
SUCI - 12	3/4	15.74	1	1-1/8	24.38	21.84	29.71	39.87
SUCI - 16	1	22.35	1-3/8	1-1/2	31.24	26.41	36.83	49.02

# SRI Reducer

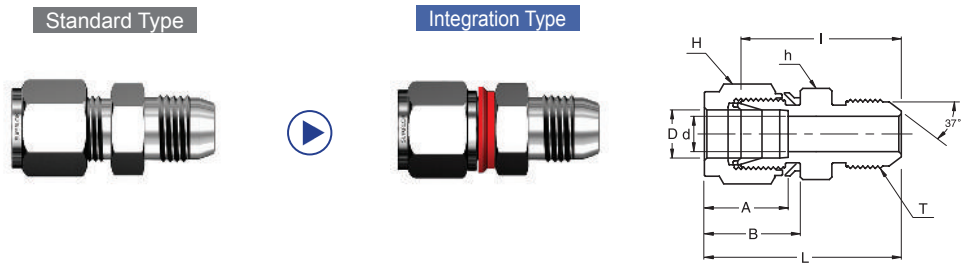


### Connects Fractional Tubes To Fractional SUPERLOK Port

Part No.	Tube O.D.		d Min	d1 Min	Width Across Flat		A	B	I	L
	D (inch)	D <sub>1</sub> (inch)			h (inch)	H (inch)				
SRI - 4 - 2	1/4	1/8	4.83	2.1	1/2	9/16	15.24	17.78	29.46	36.83
SRI - 4 - 3	1/4	3/16	4.83	3.0	1/2	9/16	15.24	17.78	30.22	37.59
SRI - 4 - 4	1/4	1/4	4.83	4.4	1/2	9/16	15.24	17.78	31.75	39.11
SRI - 4 - 5	1/4	5/16	4.83	5.6	1/2	9/16	15.24	17.78	32.51	39.87
SRI - 4 - 6	1/4	3/8	4.83	6.9	1/2	9/16	15.24	17.78	33.27	40.64
SRI - 4 - 8	1/4	1/2	4.83	9.4	9/16	9/16	15.24	17.78	38.86	46.22
SRI - 4 - 10	1/4	5/8	4.83	12.0	11/16	9/16	15.24	17.78	40.64	48.00
SRI - 4 - 12	1/4	3/4	4.83	14.8	13/16	9/16	15.24	17.78	41.40	47.75
SRI - 6 - 4	3/8	1/4	7.11	4.4	5/8	11/16	16.76	19.30	34.03	41.40
SRI - 6 - 6	3/8	3/8	7.11	6.9	5/8	11/16	16.76	19.30	35.81	43.18
SRI - 6 - 8	3/8	1/2	7.11	9.4	5/8	11/16	16.76	19.30	41.14	48.51
SRI - 6 - 10	3/8	5/8	7.11	12.0	11/16	11/16	16.76	19.30	42.92	50.29
SRI - 6 - 12	3/8	3/4	7.11	14.8	13/16	11/16	16.76	19.30	42.92	50.29
SRI - 8 - 4	1/2	1/4	10.41	4.4	13/16	7/8	22.86	21.84	34.79	44.95
SRI - 8 - 6	1/2	3/8	10.41	6.9	13/16	7/8	22.86	21.84	36.57	46.73
SRI - 8 - 8	1/2	1/2	10.41	9.4	13/16	7/8	22.86	21.84	42.16	52.32
SRI - 8 - 10	1/2	5/8	10.41	12.0	13/16	7/8	22.86	21.84	43.68	53.84
SRI - 8 - 12	1/2	3/4	10.41	14.8	13/16	7/8	22.86	21.84	43.68	53.84
SRI - 8 - 16	1/2	1	10.41	20.4	1-1/16	7/8	22.86	21.84	50.03	60.19
SRI - 12 - 8	3/4	1/2	15.74	9.4	1-1/16	1-1/8	24.38	21.84	44.45	54.61
SRI - 12 - 16	3/4	1	15.74	20.4	1-1/16	1-1/8	24.38	21.84	52.32	62.48

All dimensions in millimeters unless specified as "inch". Dimension are for reference only, subject to change

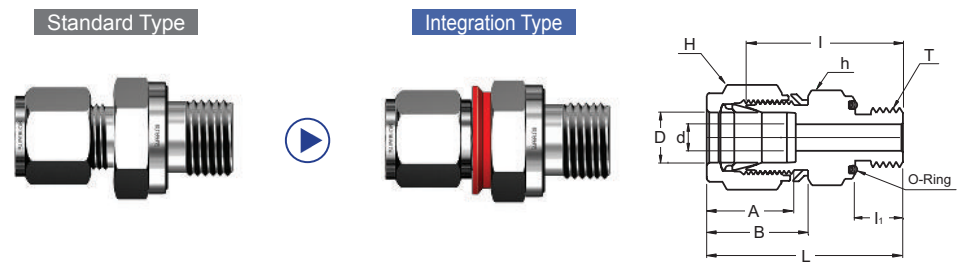
# SAUI An Union



### Connects Fractional Tubes To An Flared Tubes

Part No.	Tube O.D.	AN Tube Flare Size (inch)	Straight Thread T (U)	d Min	Width Across Flat		A	B	I	L
					h (inch)	H (inch)				
SAUI - 4 - 4U	1/4	1/4	5/16-24	4.31	1/2	9/16	15.24	17.78	30.22	37.59
SAUI - 6 - 4U	3/8	1/4	7/16-20	4.31	5/8	11/16	16.76	19.30	32.25	39.62
SAUI - 6 - 6U	3/8	3/8	9/16-18	7.11	5/8	11/16	16.76	19.30	32.25	39.62
SAUI - 8 - 8U	1/2	1/2	3/4-16	9.90	13/16	7/8	22.86	21.84	35.81	45.97
SAUI -12 - 12U	3/4	3/4	1-1/16-12	15.49	1-1/8	1-1/8	24.38	21.84	43.18	53.34
SAUI -16 - 16U	1	1	1-5/16-12	21.33	1-3/8	1-1/2	31.24	26.41	49.27	61.46

# SOSCI O-Seal Straight Thread Connector



### Connects Fractional Tube To Female Straight Thread

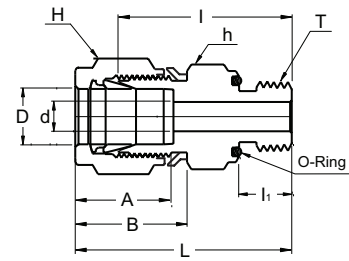
Part No.	Tube O.D. D (inch)	Straight Thread T (U)	d Min	Width Across Flat		A	B	I	I1	L	O-Ring Uniform Size Number
				h (inch)	H (inch)						
SOSCI - 4 - 4U	1/4	7/16-20	4.82	3/4	9/16	15.24	17.78	30.98	10.41	38.35	-111
SOSCI - 6 - 6U	3/8	9/16-18	7.11	15/16	11/16	16.76	19.30	35.05	11.93	42.41	-114
SOSCI - 8 - 8U	1/2	3/4-16	10.41	1-1/8	7/8	22.86	21.84	35.81	11.93	45.97	-116
SOSCI -12 - 12U	3/4	1-1/16-12	15.75	1-1/2	1-1/8	24.38	21.84	42.16	14.22	52.32	-215
SOSCI -16 - 16U	1	1-5/16-12	22.35	1-3/4	1-1/2	31.24	26.41	45.97	14.22	58.16	-219

All dimensions in millimeters unless specified as "inch". Dimension are for reference only, subject to change



# SOPCI

## O-Seal Pipe Thread Connector

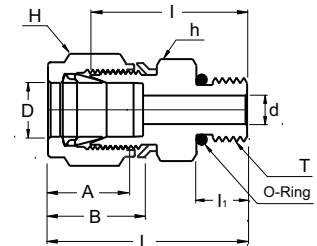


### Connects Fractional Tube To Female NPT Thread

Part No.	Tube O.D. D (inch)	T* (NPT)	d Min	Width Across Flat		A	B	I	I <sub>1</sub>	L	O-Ring Uniform Size Number
				h (inch)	H (inch)						
SOPCI - 4 - 2N	1/4	1/8	4.82	3/4	9/16	15.24	17.78	27.68	7.11	35.05	-111
SOPCI - 4 - 4N	1/4	1/4	4.82	15/16	9/16	15.24	17.78	30.98	9.65	38.35	-113
SOPCI - 6 - 4N	3/8	1/4	7.11	15/16	11/16	16.76	19.30	32.51	9.65	39.87	-113
SOPCI - 6 - 6N	3/8	3/8	7.11	1-1/8	11/16	16.76	19.30	34.03	10.41	41.40	-116
SOPCI - 6 - 8N	3/8	1/2	7.11	1-5/16	11/16	16.76	19.30	39.62	13.46	46.99	-212
SOPCI - 8 - 8N	1/2	1/2	10.41	1-5/16	7/8	22.86	21.84	39.62	13.46	49.78	-212

# SSMCI

## SAE/MS Male Connector



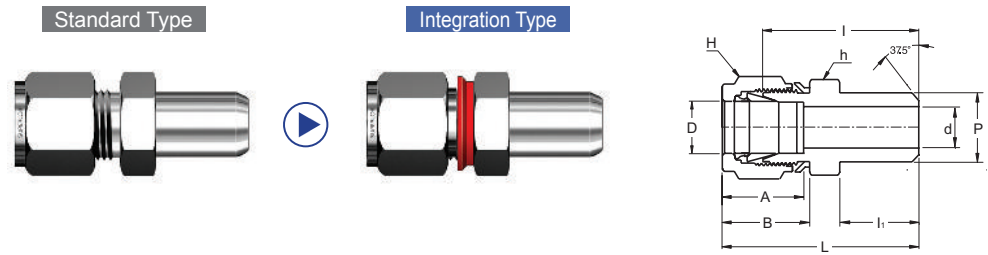
### Connects Fractional Tubes To SAE/MS Straight Thread Boss

Part No.	Tube O.D. D (inch)	Straight Thread T (U)	d Min	Width Across Flat		A	B	I	I <sub>1</sub>	L	O-Ring Uniform Size Number
				h (inch)	H (inch)						
SSMCI - 4 - 4U	1/4	7/16-20	4.82	9/16	9/16	15.24	17.78	26.67	9.14	34.03	3-904
SSMCI - 4 - 6U	1/4	9/16-18	4.82	11/16	9/16	15.24	17.78	28.19	9.90	35.56	3-906
SSMCI - 4 - 8U	1/4	3/4-16	4.82	7/8	9/16	15.24	17.78	30.22	11.17	37.59	3-908
SSMCI - 4 - 10U	1/4	7/8-14	4.82	1	9/16	15.24	17.78	33.27	12.70	40.64	3-910
SSMCI - 6 - 4U	3/8	7/16-20	5.08	5/8	11/16	16.76	19.30	28.19	9.14	35.56	3-904
SSMCI - 6 - 6U	3/8	9/16-18	7.11	11/16	11/16	16.76	19.30	29.71	9.90	37.08	3-906
SSMCI - 6 - 8U	3/8	3/4-16	7.11	7/8	11/16	16.76	19.30	31.75	11.17	39.11	3-908
SSMCI - 6 - 10U	3/8	7/8-14	7.11	1	11/16	16.76	19.30	34.79	12.70	42.16	3-910
SSMCI - 8 - 6U	1/2	9/16-18	7.11	13/16	7/8	22.86	21.84	28.95	9.90	39.11	3-906
SSMCI - 8 - 8U	1/2	3/4-16	10.41	7/8	7/8	22.86	21.84	31.75	11.17	41.91	3-908
SSMCI - 8 - 10U	1/2	7/8-14	10.41	1	7/8	22.86	21.84	34.79	12.70	44.95	3-910
SSMCI - 8 - 12U	1/2	1-1/16-12	10.41	1-1/4	7/8	22.86	21.84	38.86	14.98	49.02	3-912
SSMCI - 12 - 8U	3/4	3/4-16	10.66	1-1/16	1-1/8	24.38	21.84	35.81	11.17	45.97	3-908
SSMCI - 12 - 12U	3/4	1-1/16-12	15.74	1-1/4	1-1/8	24.38	21.84	38.86	14.98	49.02	3-912
SSMCI - 16 - 12U	1	1-1/16-12	16.76	1-3/8	1-1/2	31.24	26.41	41.14	14.98	53.34	3-912
SSMCI - 16 - 16U	1	1-5/16-12	22.35	1-1/2	1-1/2	31.24	26.41	42.16	14.98	54.35	3-916

All dimensions in millimeters unless specified as "inch". Dimension are for reference only, subject to change

# SPWCI

## Male Pipe Weld Connector

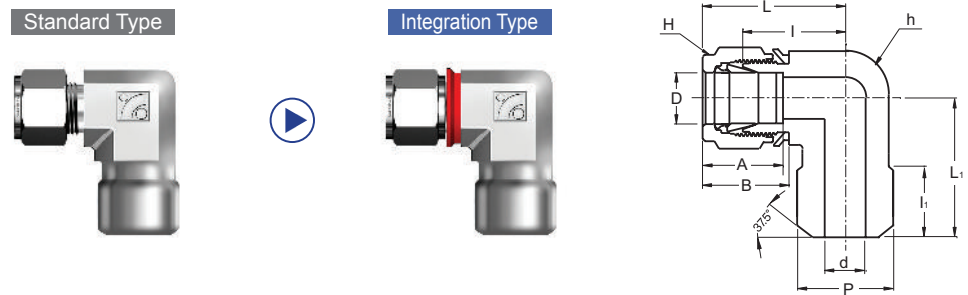


### Connects Fractional Tubes To Pipe

Part No.	Tube O.D. D (inch)	Male Pipe Size(P)		d Min	Width Across Flat		A	B	I	I <sub>1</sub>	L
		Nom.	O.D.		h (inch)	H (inch)					
SPWCI - 4 - 2P	1/4	1/8	10.30	4.82	1/2	9/16	15.24	17.78	25.40	9.65	32.76
SPWCI - 4 - 4P	1/4	1/4	13.70	4.82	9/16	9/16	15.24	17.78	30.48	14.22	37.84
SPWCI - 6 - 4P	3/8	1/4	13.70	7.11	5/8	11/16	16.76	19.30	32.51	14.22	39.87
SPWCI - 6 - 6P	3/8	3/8	17.10	7.11	11/16	11/16	16.76	19.30	32.51	14.22	39.87
SPWCI - 6 - 8P	3/8	1/2	21.30	7.11	7/8	11/16	16.76	19.30	38.86	19.05	46.22
SPWCI - 8 - 6P	1/2	3/8	17.10	10.41	13/16	7/8	22.86	21.84	33.27	14.22	43.43
SPWCI - 8 - 8P	1/2	1/2	21.30	10.41	7/8	7/8	22.86	21.84	38.86	19.05	49.02
SPWCI - 16 - 16P	1	1	33.40	33.40	1-3/8	1-1/2	31.24	26.41	50.03	23.87	62.23

# SMPWEI

## Male Pipe Weld Elbow



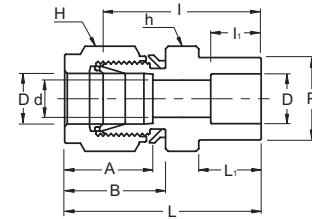
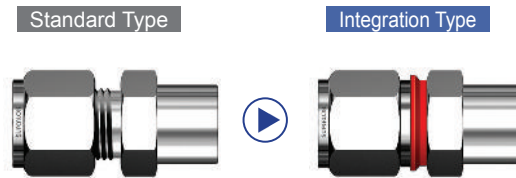
### Connects Fractional Tubes To Pipe

Part No.	Tube O.D. D (inch)	Male Pipe Size(P)		d Min	Width Across Flat		A	B	I	I <sub>1</sub>	L	L <sub>1</sub>
		Nom.	O.D.		h (inch)	H (inch)						
SMPWEI - 4 - 4P	1/4	1/4	13.70	4.82	1/2	9/16	15.24	17.78	19.55	14.22	26.90	23.37
SMPWEI - 6 - 4P	3/8	1/4	13.70	7.11	5/8	11/16	16.76	19.30	23.11	14.22	30.48	25.40
SMPWEI - 8 - 8P	1/2	1/2	21.30	10.41	13/16	7/8	22.86	21.84	25.90	19.05	36.06	33.02

All dimensions in millimeters unless specified as "inch". Dimension are for reference only, subject to change

# SSWCI

## Tube Socket Weld Connector

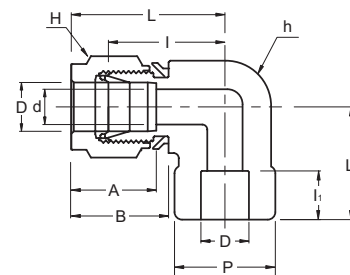
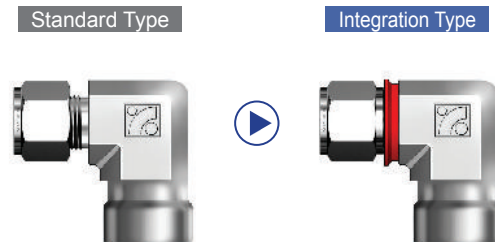


### Connects Fractional Tubes

Part No.	Tube O.D. D (inch)	d Min	P	Width Across Flat		A	B	I	I <sub>1</sub>	L	L <sub>1</sub>
				h (inch)	H (inch)						
SSWCI - 4	1/4	4.82	11.17	1/2	9/16	15.24	17.78	26.16	7.87	33.52	10.41
SSWCI - 6	3/8	7.11	15.74	5/8	11/16	16.76	19.30	30.22	9.65	37.59	11.93
SSWCI - 8	1/2	10.41	19.05	13/16	7/8	22.86	21.84	30.98	12.70	41.14	11.93
SSWCI - 12	3/4	15.74	26.67	1-1/16	1-1/8	24.38	21.84	33.27	14.22	43.43	11.93
SSWCI - 16	1	22.35	33.27	1-3/8	1-1/2	31.24	26.41	40.38	19.05	52.57	14.22

# SSWEI

## Tube Socket Weld Elbow



### Connects Fractional Tubes

Part No.	Tube O.D. D (inch)	d Min	P	Width Across Flat		A	B	I	I <sub>1</sub>	L	L <sub>1</sub>
				h (inch)	H (inch)						
SSWEI - 4	1/4	4.82	12.70	1/2	9/16	15.24	17.78	19.55	7.87	26.92	19.55
SSWEI - 6	3/8	7.11	15.75	5/8	11/16	16.76	19.30	23.11	9.65	30.48	23.11
SSWEI - 8	1/2	10.41	20.57	13/16	7/8	22.86	21.84	25.90	12.70	36.06	25.90
SSWEI - 12	3/4	15.74	26.92	1-1/16	1-1/8	24.38	21.84	29.71	14.22	39.87	29.71
SSWEI - 16	1	22.35	35.05	1-3/8	1-1/2	31.24	26.41	36.83	19.05	49.02	36.83

## Valve Series

- Key Operation Ball Valves
- Key Operation Needle Valves
- Ball Valves
- Integral Bonnet Needle Valves
- Union Bonnet Needle Valves
- Check Valves
- High Pressure Check Valves
- High Pressure Needle Valves
- Plug Valves
- Manifold Valves
- Vacuum Clamps
- Water Regulators
- Flexible Hoses
- Double Block & Bleed Valves
- Swing-Out Ball Valves
- Toggle Valves
- Bleed & Purge Valves
- Quick Connectors
- High Pressure Ball Valves
- Hydraulic Ball Valves
- Trunnion Ball Valves
- Rising Plug Valves
- Relief Valves
- Cryogenic Needle Valves
- Cryogenic Ball Valves
- Micron in-Line Filters
- Gauge Root Valves
- Hydraulic Flange and Components

## Fitting Series

- Tube Fittings (Compression Type)
- Instrument Thread Fittings
- Forged Fittings
- Bite Type Tube Fittings (DIN2353)
- Bite Type Tube Fittings (JIS B2351)
- 37 Flared Tube Fittings (SAE J514)
- O-Ring Face Seal Fittings
- Hose Connectors & Push-On Hose Fittings

## Electric

- MCPD(Molded Case Power Distributor)

## BMT Co., Ltd.

21-1, Bukjeong-dong Yangsan  
Gyeongsangnam-do Korea  
Tel. 82-55-783-1000  
Fax. 82-55-783-1111  
superlok@superlok.com

경상남도 양산시 북정동 21-1  
전화 : 055-783-1000  
팩스 : 055-783-1111  
superlok@superlok.com

## Integration Tube Fitting Series



**“Perfect installation is guaranteed by I-Fitting”**